

ASP6025 S

Total Confidence in Every Tissue

SEEING IS BELIEVING - **NEW** ASP6025 S



Advancing Cancer Diagnostics
Improving Lives

Leica
BIO SYSTEMS

BOOST YOUR CONFIDENCE IN QUALITY AND RELIABLE TISSUE PROCESSING WITH THE **NEW** ASP6025 S

NEW ASP6025 S is designed to improve your lab's performance with quality-driven technology that optimizes tissue processing performance and supports rapid processing.

QUALITY-DRIVEN AND RELIABLE

The New ASP6025 S introduces the next-generation tissue processor with even more reliable and stable capabilities. Designed for fast turnaround times, the ASP6025 S processes up to 300 cassettes simultaneously.



INCREASE PROCESSING SPEED AND TISSUE QUALITY

The advanced magnetic stirrer technology is designed to optimize paraffin infiltration performance, helping reduce processing time and enhancing reagent exchange within the tissue cells.



TISSUE SAFETY: DENSITY METER TRACKING REAGENT CONCENTRATION

The built-in Density Meter effectively measures the concentration of each alcohol bottle in real time, showing the reagent status to ensure optimal usage of reagents for improved processing quality and reduced reagent consumption.

PRE-INSTALLED VALIDATED PROTOCOL

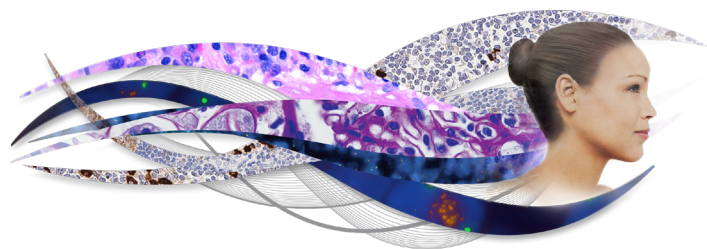
Leica Biosystems pre-installed validated protocols, along with xylene and low-temperature xylene-free protocols, giving you the flexibility to process different tissue types.

ASP6025 S

ASP6025 S Tissue Processor **Technical Specifications**

<p>Dimensions (L x W x H): 680 x 750 x 1500 mm (26.77 x 29.53 x 59.05 inch)</p> <p>Weight (instrument only): Approx. 210 kg (463 lbs)</p> <p>Cassette capacity: Max. 300 cassettes</p> <p>Retort reagent volume: Max. 4.8 L (up to fill level of third sensor, without specimen filling)</p> <p>Paraffin container capacity: 3 paraffin baths: 4.9 L each 1 pre-melt paraffin station: 5.0 L</p> <p>System bottles: 9 (in the reagent cabinet)</p> <p>RTU-bottles: 6 (in the drawer)</p> <p>Condensate bottle: 1</p> <p>Bottle volume: 3.8 and 5.0 L</p> <p>Password status: Supervisor/operator/service</p> <p>Operating voltage and frequency: 100 to 120 V or 220 to 240, 50 to 60 Hz</p>	<p>Built-in backup battery Backup battery ensures the specimens covered with appropriate reagent during a power failure</p> <p>Reagent management system (RMS): Switch between RMS and concentration measurement</p> <p>Carbon filter: Efficient fume exhaust at retort lid and xylene-free protocols</p> <p>Remote fill and drain: Remotely fill and drain the respective system bottle from an external station</p> <p>Leica validated protocols: Total 14 programs: 3 autorotation, 6 xylene (including fatty tissue) and 5 xylene-free</p>
--	---

Leica Biosystems is a cancer diagnostics company and a global leader in workflow solutions, offering the most comprehensive portfolio from biopsy to diagnosis. Our mission of "Advancing Cancer Diagnostics, Improving Lives" is at the heart of our corporate culture. Our easy-to-use and consistently reliable offerings help improve workflow efficiency and diagnostic confidence.



Copyright © 2019 Leica Biosystems, a division of Leica Microsystems Inc. All Rights Reserved. LEICA and the Leica logo are registered trademarks of Leica Microsystems IR GmbH. ASP6025 S is a trademark of the Leica Biosystems group of companies in the USA and optionally in other countries. Other logos, product and/or company names might be trademarks of their respective owners.

190304 Rev E 11/2019