

# APERIO GT 450 SLIDE SCANNER

BROCHURE

Fast forward  
to next  
generation imaging

Integrating innovation and  
automation for research labs

For research use only. Not for use in diagnostic  
procedures.

\*International patent families including patent applications  
and granted patents.



More than 30  
Patents **SMARTER\***

Accelerate Your Journey  
Imagine The Possibilities

**Leica**  
BIOSYSTEMS

High resolution  
Limited rescans  
Faster turnaround time  
Next generation imaging for **Scientists**  
Resolution Precision  
Integrated work-flow  
Craftsmanship  
State-of-the-art  
Fast viewing speeds  
Confident Diagnosis  
Peace of mind  
Ease of use  
DICOM

Designed to rapidly deliver images with excellent image quality for Scientists.










“I am really impressed with the sharpness and contrast of the images. It is definitely next-generation image quality.”

– W. Dean Wallace M.D., Professor, Pathology and Laboratory Medicine, David Geffen School of Medicine at UCLA

Aperio GT 450 utilizes a high performance 40x objective manufactured by Leica, the company that has engineered world class optics since 1841.



# D I G I T A L P A T H O L O G Y

-  Excellent image quality using Leica optics.
-  Automated image quality check and slide calibration during each scan.
-  Small footprint, large capacity.
-  No-touch continuous rack loading during scanning.
-  Assign priority slides.
-  Z-Stack Multiplane scanning that produces a composite, 3D image.\*\*
-  Automated Narrow Stripe enabling a rescan when the system detects image.



20x magnification available\*\*



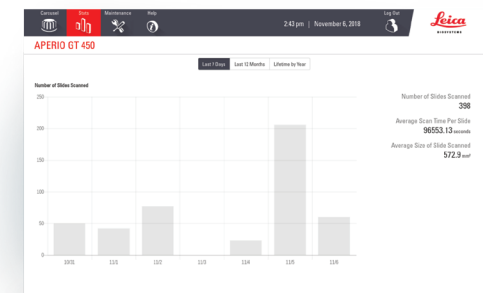
\*15mm x 15mm scan area @ 40x; assumes 5 hr. scan time per day for 300 work days per year



Aperio GT 450 open face design allows you to continuously load racks while scanning is in progress to maximize productivity.



Featuring automatic image quality control, so you have image quality confidence before your scans reach the Scientist.



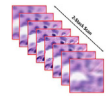
Stats page allows you to view slides scanned/day/month/year, average scan area and average scan speed.





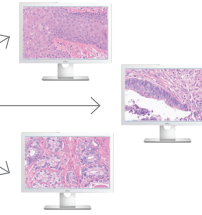
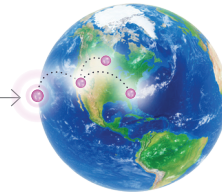
Aperio GT 450 illuminates tissue from both sides of the slide resulting in a 99.5% accurate tissue finder that recognizes faintly-stained tissue while excluding:

- > Pen marks
- > Stain residue
- > Scratches
- > Dust



Z-stacking enables scientists to review slide samples at varied levels of thickness, similar to a traditional microscope.\*\*

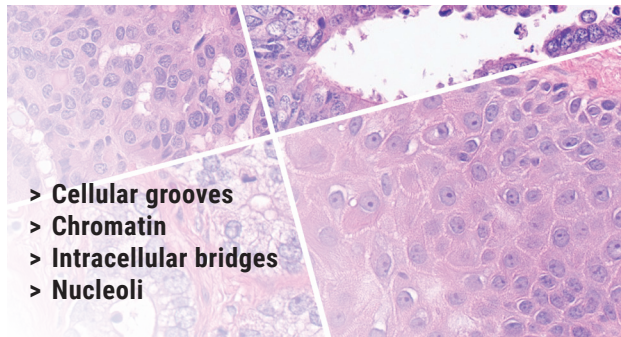
View and share images at multiple locations.



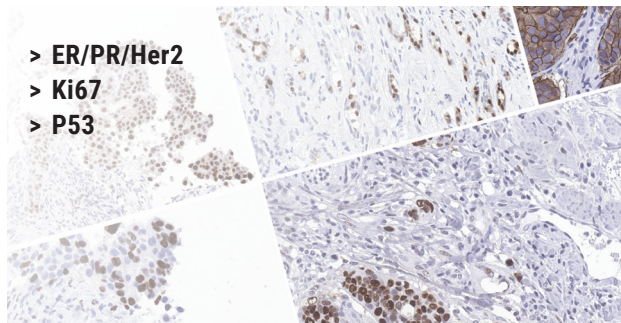
Aperio GT 450 applications:

- > Cancer research
- > Toxicology research
- > Basic cell biology research
- > Immunology research
- > Digital archiving
- > Drug development studies

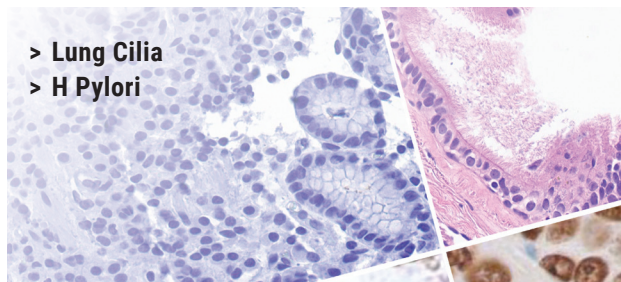
"Good cellular details at high power and good focus throughout the tissue." – Sally Agersborg, MD, PhD, Medical Director, NeoGenomics Laboratories, Inc.



- > Cellular grooves
- > Chromatin
- > Intracellular bridges
- > Nucleoli



- > ER/PR/Her2
- > Ki67
- > P53



- > Lung Cilia
- > H Pylori

Access and organize your cases with Aperio eSlide Manager integrated into an LIS.

Aperio Viewer or  
Aperio ImageScope\*\*

Integrated LIMS/LIS



Laboratory Information System

B15-515 Final Report

Patient: Jane Doe Rec.#: 11010601 Spec: CLASS B-PCIS, Routine Client: Academic Medical Center  
DOB: (Age: 30) F Birthdate: 20110213 Acc. Date: 01/20/2016 Case: Accession#

Scan	Slide	Status	Status Date
69-Part A, PATHOLOGY SPECIMENS			
1000	1	Not Reported	Ready
1001	1	Not Reported	Ready

Viewer: Aperio

Load All  
Load Selected



D I G I T A L P A T H O L O G Y

Fast scans No shipping **Confidence**  
Next generation imaging for **Researchers** Auto QC Fast-paced  
**First-time scan success** Be more productive  
Cross-training Easy to use Continuous loading Be on time

Designed to deliver rapid results with confidence for researchers.



Directly load racks from coverslipper to scanner.

“The Aperio GT 450 is very easy to use and a companion in the lab.”

– Brittney Hosac - Lab Assistant, NeoGenomics


The products shown above, the HistoCore SPECTRA Workstation, in combination with the Aperio GT 450, are for Research Use Only (RUO).

For research use only. Not for use in diagnostic procedures.



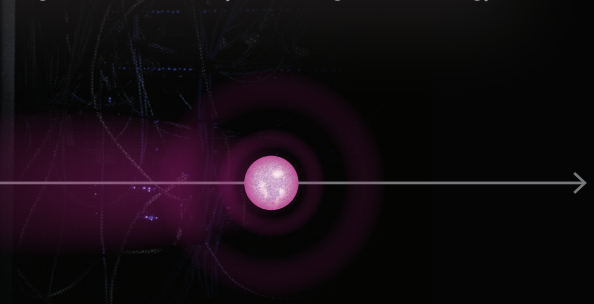
Login controls **Security** Store and forward Easy setup  
High speed data transfer DICOM or SVS compatible  
Next generation imaging for **IT Professionals** Flexibility  
Large storage Encryption

Designed to deliver fast, secure,  
and scalable IT architecture for IT  
Professionals.



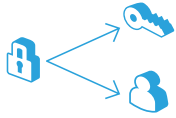
“The IT architecture for the Aperio GT 450, including the SAM central hub, is a gigantic leap forward to scale and support digital pathology IT operations.”

– Chris Khacherian, UCLA Program Manager, Service Delivery, DGIT | Digital Technology



A secure, flexible and fast  
IT solution to scale up your  
Digital Pathology operations.

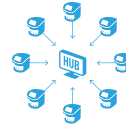




**Cyber security** including encryption and login controls.



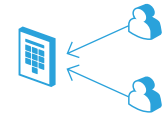
HL7 and PACS ready, for **integration** into LIS, LIMS or PACS.



Securely scan slides at a **spoke** location and store images at a **Hub** location for all sites to log in and view images.



**Store and forward:** store images temporarily then transfer during low IT traffic times.



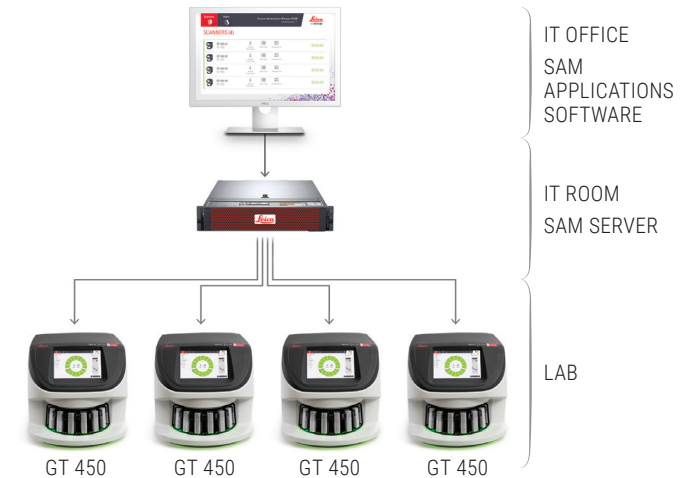
Set up user-specific **log in** for each Aperio GT 450.



A centralized Scanner Admin Manager (SAM) will allow IT professionals to scale up Digital Pathology operations securely and efficiently.



No more workstations needed. SAM server and software allow IT managers to set up and monitor GT 450 scanners via the network, including dashboard status views, PIN controls and log out times.



From the lab to the IT room the Aperio GT 450 was designed for **Scientists, Researchers, and IT Professionals**



\*\*The Aperio GT 450 Release 1.3 consists of three upgrades that improve image quality and flexible scanning solutions in research settings: 20x magnification, Automated Narrow Stripe Scanning, and Z-Stack Scanning.

**Aperio GT 450 Summary of Specifications**

Maximum Slide Capacity	450
Rack capacity	15 racks of 30 slides, 15 racks of 20 slides
Racks compatible with Leica HistoCore SPECTRA Workstation	Yes
Continuous rack loading while scanning	Yes
Priority rack scanning	Yes
Z-stacking	Yes
Magnification	20x, and 40x
Resolution	0.26 µm/pixel at 40x
Scan speed (15mm x 15mm area at 40x)	32 sec
Sustained throughput (15mm x 15mm area at 40x)	81 slides/hr
Automated Image Quality Check	Yes
Slide sizes accepted	1x3
Field of View (FOV)	1mm
Bar code engines	1D and 2D symbology
Dimension	20.8" (52.83 cm) W x 28" (71.12 cm) L x 19.5" (49.53 cm) H
Weight	140 lbs (63.5 kg)

\*Parts shown are each sold separately.

Part Number	Description
23GT450	Aperio GT 450 Scanner
23GT450SAM	Aperio GT450 Scanner Admin Manager (SAM) Server
23GT450SAMSWS	Aperio GT450 Scanner Admin Manager (SAM) Applications Software
23Dell740XD21TB	Dell 740 XD image storage DSR 21 Terabytes
23Dell740XD42TB	Dell 740 XD image storage DSR 42 Terabytes
23Dell740XD85TB	Dell 740 XD image storage DSR 85 Terabytes
23Dell740XD138TB	Dell 740 XD image storage DSR 138 Terabytes
23VS101	Aperio viewing station (includes calibrated monitor, workstation, Aperio ImageScope viewer and optimized ICC file)
23GT450ZSTACKSW	Feature Pack

SCAN OR  
CLICK TO  
LEARN  
MORE



LEICA BIOSYSTEMS IS AN INTERNATIONAL COMPANY WITH A STRONG NETWORK OF WORLDWIDE CUSTOMER SERVICES

For detailed contact information on your nearest sales office or distributor please visit our website: [LeicaBiosystems.com](http://LeicaBiosystems.com)



Copyright © 2023 Leica Biosystems, a division of Leica Microsystems Inc. All Rights Reserved. LEICA and the Leica logo are registered trademarks of Leica Microsystems IR GmbH. Aperio, GT, and GT 450 are registered trademarks of the Leica Biosystems group of companies in the USA and optionally in other countries. Other logos, product and/or company names might be trademarks of their respective owners.

Leica Biosystems is a global leader in workflow solutions and automation. As the only company to own the workflow from biopsy to diagnosis, we are uniquely positioned to break down the barriers between each of these steps. Our mission of "Advancing Cancer Diagnostics, Improving Lives" is at the heart of our corporate culture. Our easy-to-use and consistently reliable offerings help improve workflow efficiency and diagnostic confidence. The company is represented in over 100 countries. It has manufacturing facilities in 9 countries, sales and service organizations in 19 countries, and an international network of dealers. The company is headquartered in Nussloch, Germany. Visit [LeicaBiosystems.com](http://LeicaBiosystems.com) for more information.